

The Taking of The Pelham

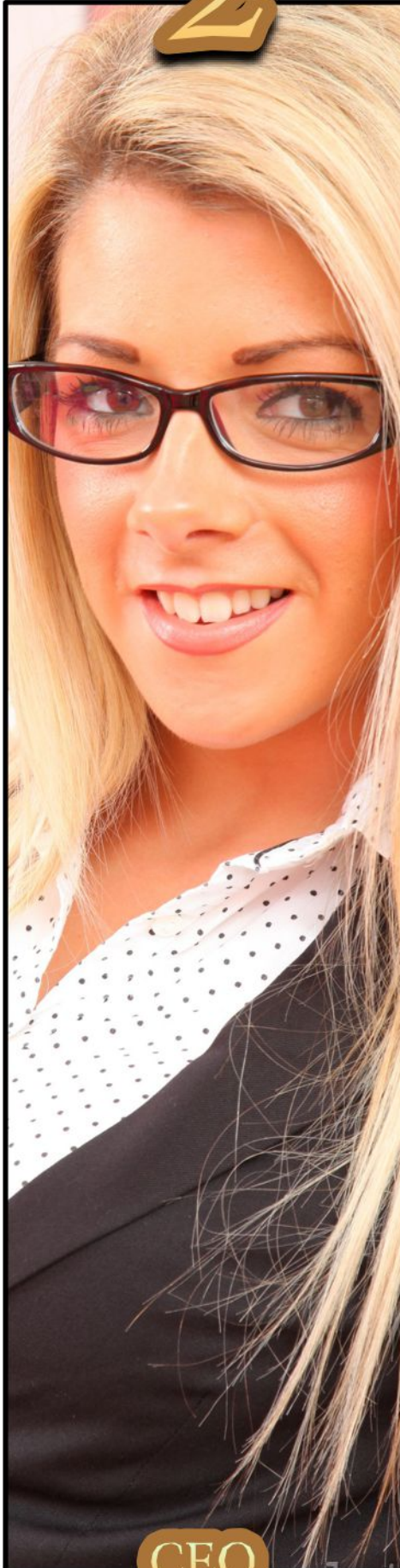
Part IV

1



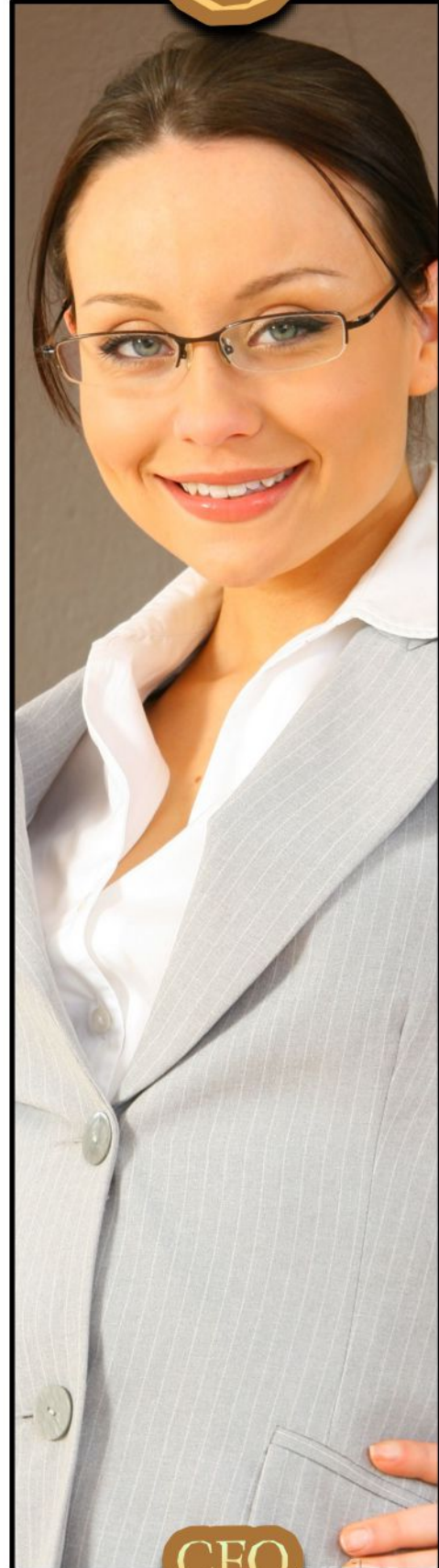
CBO

2



CEO

3



CFO


I HAD TO SAY, HELEN HAD A NICE PLACE. VERY...ORDERED. JUST THE SORT OF PLACE I'D EXPECT FROM SUCH A CONTROL FREAK. EVERYTHING IN ITS PLACE. HER OWN ORDERED LITTLE REALM



I'D STOPPED PAST TO SEARCH FOR ANY USEFUL MATERIAL AND TO PLANT A FEW BUGS. I COULDN'T HELP BUT WONDER WHAT HELEN GOT UP TO ON HER OWN TIME.



AND OF COURSE A TRIP TO THE KITCHEN. TIME TO CHANGE OUT SOME DRINKS AND HEALTH SUPPLEMENTS FOR SOME WITH SOME ADDED EXTRAS. I'D GONE FOR LOW DOSES THIS TIME. I WANTED TO SEE HER CONFUSION, WONDERING WHAT WAS HAPPENING TO HER. I LOOKED FORWARD TO SEEING THE CHANGES...NOW TO VISIT ANNE.



HI ANNE. I KNOW
YOU'VE BEEN
WAITING BUT I'VE
BEEN BUSY.

I DON'T MIND.

I THOUGHT WE
SHOULD TALK
OUTSIDE THE
OFFICE. HENCE
THE MOTEL.

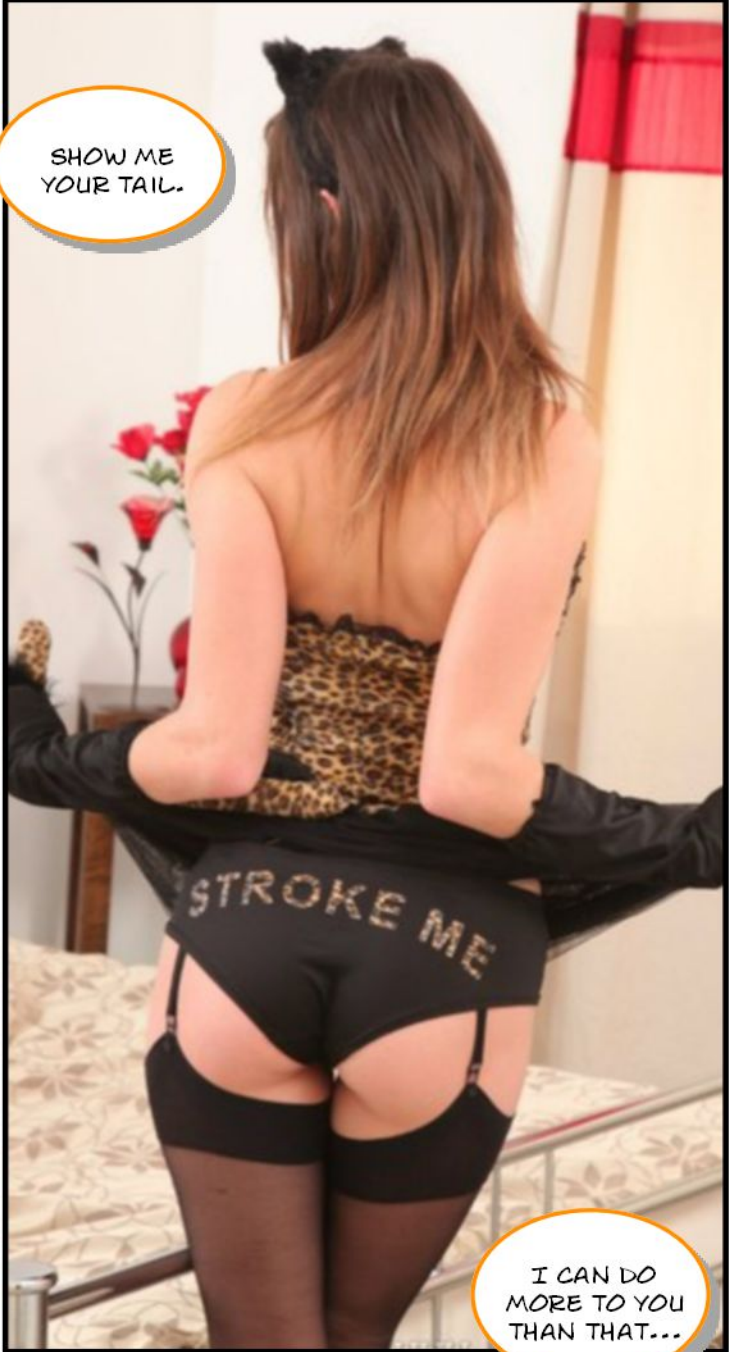
I PAID WITH
FRANCIS' CARD
LIKE YOU SAID.

GOOD GIRL.
I WANT YOU TO
GRAB THE STUFF
ON THE BED AND
CHANGE.



THERE'S A
PRETTY LITTLE
KITTY.

PURRRRRR



SHOW ME
YOUR TAIL.

I CAN DO
MORE TO YOU
THAN THAT...

one video our fucking life



DID YOU
ENJOY THAT

NO...YES,
NO.

WOULD YOU
RATHER I WAS
KEVIN?

NO!!

HOW ABOUT IF
YOU NEVER HAD
TO SEE KEVIN
AGAIN?

PLEASE!
HE, HE'S HORRIBLE.
WORSE THAN I
REMEMBERED.

I THINK I CAN
ARRANGE A NICER
PARTNER FOR YOU. A
MORE LOVING ONE.

Next day

ANNE THIS IS KELLY.
KELLY WORKS AS AN
OFFICE JUNIOR AT
PELHAM.

HI MS. WESCOTT!
I AM SUPER
EXCITED TO
MEET YOU!

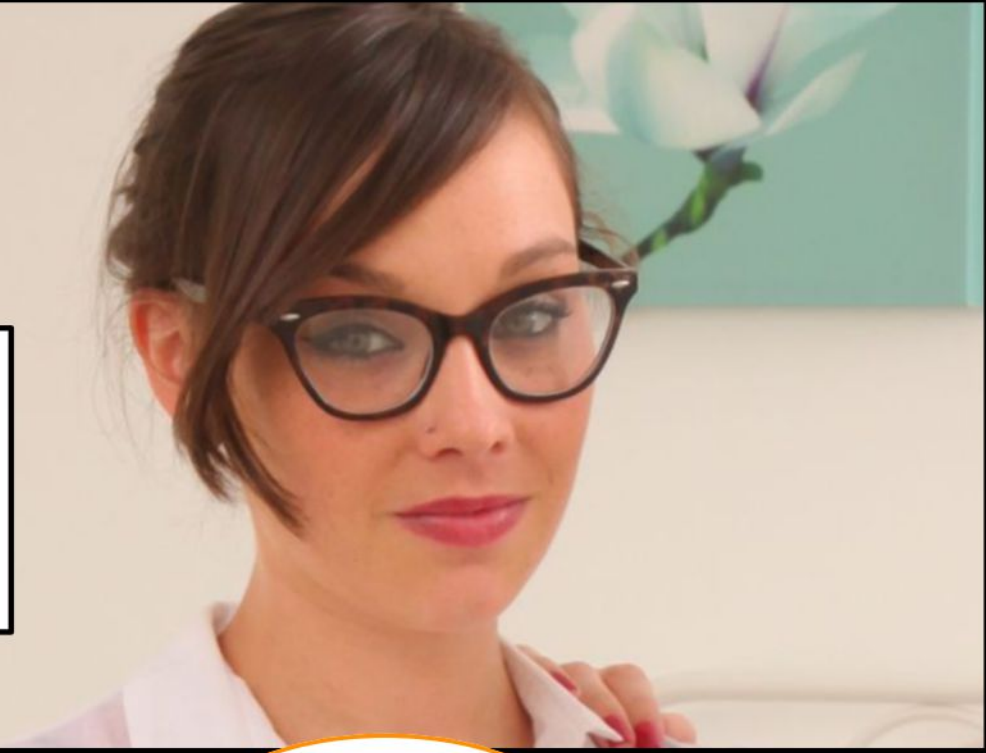
I'VE TOLD KELLY THAT
YOU HAVE ONLY JUST
DISCOVERED THAT YOU
ARE A LESBIAN.

SUPER
EXCITED!!!

I SMILED AS I SAW
ANNE'S EXPRESSION
OF HORROR, SHE WAS
VERY HETRO AND THE
IDEA OF BEING WITH
THIS YOUNG GIRL
REVOLTED HER.

I'M GOING TO LEAVE YOU
GIRLS TO GET
ACQUAINTED. ANNE,
REMEMBER KELLY IS IN
CHARGE.

THE HATRED OF ME
WAS PALPABLE. SHE
WASN'T JUST BEING
FORCED TO BE A
LESBIAN, SHE WAS IN
THE CHARGE OF AN
OFFICE JUNIOR.



REMEMBER ANNE'S NEW
TO THIS KELLY, SO SHOW
HER THE ROPES.

I WILL SIR!



ANNE IS STILL PRETTY SHY
AND EMBARRASSED ABOUT
COMING OUT SO GENTLE
WITH HER.

LIKE A FAIRY
PRINCESS SIR.



ANNE WESCOTT, ONCE THE PA TO AN INFLUENTIAL WOMAN. A PERSON WITH AMBITION AND DREAMS. NOW SHE WAS A HELPLESS, HORNY, FORCED LESBIAN TOY TO A YOUNGER GIRL.




KELLY HARRIS, YOUNG AND NAIVE. FULL OF HOPES FOR THE FUTURE. SECRETLY HARBOURING A CRUSH ON ANNE FOR MONTHS BUT NEVER IMAGINING SHE'D BE HERE WITH HER.

WOULD YOU GIRLS MIND IF I STAYED AND WATCHED?

OH NO SIR. YOU BROUGHT US TOGETHER.

OH PLEASE, NO.



A photograph of two women sitting on a bed. The woman on the left is wearing a white short-sleeved blouse with ruffled shoulders, a black skirt, black tights, and black high-heeled shoes. She has dark hair, wears glasses, and has her hand on the shoulder of the woman next to her. The woman on the right is wearing a white long-sleeved blouse with a deep V-neckline, a black skirt, black tights, and black high-heeled shoes. She has brown hair with bangs, wears glasses, and is smiling. They are both looking towards the camera. In the background, there is a white bed frame, a blue lamp, and a green lamp.

DON'T YOU TWO LOOK
LIKE HAPPY LOVEBIRDS?!

THE HATE IN ANNE'S EYES WAS OBVIOUS TO ME BUT LOST ON POOR LOVESICK KELLY. HER LESBIAN DREAMS WERE COMING TRUE AND ANNE'S LESBIAN NIGHTMARE WAS JUST BEGINNING. I'D HAVE THE HOLD HANDS AND KISS AT WORK. PAW EACH OTHER WHEN THEY HAD THE CHANCE. THE WORLD WOULD KNOW THEY WERE LESBIAN LOVERS.



NOW REMEMBER ANNE,
KELLY IS IN CHARGE.
KELLY, ANNE NEEDS A
FIRM HAND. CAN YOU GIVE
HER ONE?

OH YES SIR!
I'LL MAKE SURE
SHE KNOWS WHO
IS IN CHARGE.



I THINK ANNE IS IN LOVE
WITH YOU ALREADY KELLY.



THAT'S IT ANNE.
SHOW KELLY YOU
CAN BE THE LEZ OF
HER DREAMS.



I WAS FINDING THIS MOST ENTERTAINING. WATCHING ANNE EMBRACE HER NEW ROLE, UNWILLINGLY BUT WITH THE REQUIRED ENTHUSIASM. PERHAPS I'D HAVE THEM MOVE IN TOGETHER...





NOW SPANK HER KELLY! I KNOW YOU'RE NOT USED TO DOING IT BUT ANNE REQUIRES A FIRM HAND AND WELL...SHE LOVES TO BE SPANKED.

BUT, BUT I'VE NEVER...

KELLY, LISTEN TO ME. IF YOU WANT THIS RELATIONSHIP TO WORK I'D RECOMMEND SETTING UP REGULARLY DAILY SESSIONS. PERHAPS FIRST THING IN THE MORNING AND LAST THING AT NIGHT. ASK ANNE IF SHE'S BEEN BAD AND IF SHE HAS PUNISH HER. IF SHE'S HAD NAUGHTY DREAMS ABOUT ME, OR LOOKED AT A MAN THAT WAY.

OF COURSE POOR ANNE WOULDN'T BE ABLE NOT TO CONFESS SOMETHING, I'D MADE SURE OF THAT.




WELL I'LL LEAVE YOU GIRLS TO IT. SOME OF US HAVE WORK TO DO. I'LL TALK TO FRAN AND SEE IF I CAN ARRANGE FOR YOU TWO TO WORK TOGETHER IN THE OFFICE. MAY MEAN A DEMOTION FOR YOU THOUGH ANNE...DO YOU MIND?



A close-up photograph of two women with brown hair and glasses, both with nipple piercings. They are looking towards the camera. The woman on the left has a small nose ring. There are two speech bubbles: one at the top center and one on the right side.

BYE BYE LOVERS. SEE
YOU TOMORROW. HAVE A
GREAT EVENING.

THANK YOU
SIR.



SO HAVE YOU INVITED
HENRY OVER?

I-I'M REALLY
NOT SURE
ABOUT THIS.

WHY? NEIL AND JUNE
ARE AT HIS MOTHER'S
PLACE. YOU HAVE THE
HOUSE TO YOURSELF.

HE'S NEIL'S
BEST FRIEND.

SO WOULD YOU
RATHER NEIL FUCKED
HIM?

N-NO

THEN TONIGHT
SEDUCE HIM. DON'T
GO FULL PINKY PET.
JUST SULTRY AND
AVAILABLE.

O-OKAY.

Later that evening

THANK YOU FOR COMING ROUND HENRY.

OF COURSE. YOU SAID YOU AND NEIL WERE HAVING ISSUES?

THERE'S NOT AN EASY WAY TO SAY THIS HENRY...NEIL IS GAY.

GAY?
NEIL?...

IT, ITS TRUE. HE TOLD ME.

I, I CAN'T BELIEVE IT. HE'S NEVER SHOWN ANY...

HE'S BEEN WEARING MY CLOTHES AND HIS BROWSER HISTORY IS FULL OF GAY PORN SITES.

M-MY GOD!

I FEEL SO BETRAYED. SO UNWANTED

NONE OF THIS IS YOUR FAULT.

LET ME CHECK ON DINNER.

DINNER?
I DIDN'T COME OVER EXPECTING A MEAL.

ITS THE LEAST I COULD DO HENRY. YOU'VE BEEN SUCH A GOOD FRIEND TO NEIL. NOW I NEED YOU TO BE A FRIEND TO ME...

OF COURSE FRANCIS.

CALL ME FRAN.



A woman with blonde hair and blue eyes, wearing a red halter top with white polka dots and a red headband. She is smiling and looking towards the camera, with her right hand raised near her face. A speech bubble is positioned in the upper left corner of the image.

HENRY!!!
YOU'RE SO
BIG!!



Next morning at the office

BEFORE I FUCK YOU
PINKY PET, HOW WAS
LAST NIGHT?

**IT WAS
YUMMY!!!
HENRY IS SOOOO
BIG!**

BETTER THAN ME?

**NO SILLY!!
YOU MAKE
PINKY PET
COME SOOO
MUCH!!**

THERE'S A GOOD
LITTLE BIMBO.



A young woman with long, wavy blonde hair and blue eyes is smiling at the camera. She is topless and has her hands placed on her breasts. The background is a plain, light-colored wall with a green plant visible on the left side.

**PINKY PET WANTS
TO BE THE BEST
BIMBO EVER!!!!**

End of Part IV